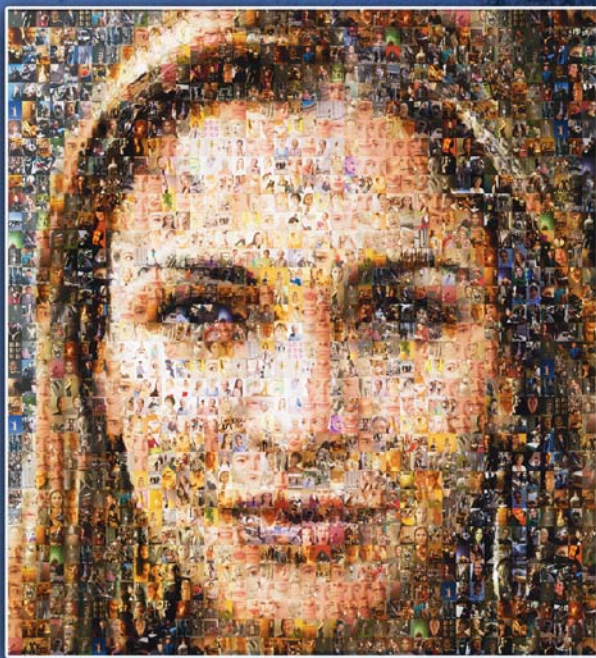


NAFAS  
MEMBER AGENCY DIRECTORY  
2010-2011



YOU'RE NEVER ALONE ON THE ROAD TO RECOVERY



NAFAS

---

NASSAU ALLIANCE FOR ADDICTION SERVICES

---

[www.nassaualliance.org](http://www.nassaualliance.org)

# *Nassau Alliance for Addiction Services*

*“The struggle with addiction that so many face each day is truly tragic.*

*Helping our friends, families and loved ones who struggle with addiction is a responsibility we all share. I commend NAFAS for their treatment services and support programs that have helped many residents of our County get on the road to recovery.”*

*– County Executive Edward P. Mangano*



Dear Reader,

This directory was developed to provide valuable information as it relates to identifying resources for those in need of drug and alcohol assistance. This directory is compiled of organizations, the majority of which are licensed through the New York State Office of Substance Abuse Services, that treat those in Nassau County who may be affected by the use and abuse of alcohol and other substances, as well as gambling and other addictions.

Our agencies strongly and unceasingly advocate and educate to ensure that help is available to all those in need while preserving and enhancing the quality of treatment. Through the availability of a wide range of services for individuals, families, and groups, our agencies are well positioned to assist the communities of Nassau County.

The organizations are listed alphabetically within this directory. We welcome you to contact any of our member agencies with questions or concerns, or you can visit the NAFAS website at [www.nassaualliance.org](http://www.nassaualliance.org).

Thank you,  
The Executive Committee of  
Nassau Alliance for Addiction Services





# Table of Contents

## **Central Nassau**

Bridge Back to Life Center*	29
Central Nassau Guidance and Counseling Services	6
Community Counseling Services of West Nassau	8
Confide Counseling Center	9
Education & Assistance Corporation (EAC)	11
Family & Children's Association	12
Hispanic Counseling Center, Inc.	14
Long Island Council on Alcoholism & Drug Dependence (LICADD)*	31
People (BADA Inc.)	20
REACT Center Inc.	22
Reflections Counseling Center	23
Seafield Center/Seafield Mineola*	32
YES Community Counseling Center	27

## **North Nassau**

COPAY, Inc.	10
Kenneth Peters Center for Recovery*	30
Melillo Center	17
Port Counseling Center, Inc.	21
Tempo Group, Inc.	26
Youth and Family Counseling Agency of Oyster Bay- East Norwich, Inc.	28

## **South Nassau**

Baldwin Council Against Drug Abuse, Inc. (BCADA)	5
C.O.D.A. at the Five Towns Community Center	7
Freeport Pride	13
Long Beach Medical Center	15
Long Beach Reach, Inc.	16
Oceanside Counseling Center, Inc.	18
Peninsula Counseling Center Chemical Dependence Treatment	19
South Shore Child Guidance Center, The C.A.R.E. Center	24
Southeast Nassau Guidance Center, Inc.	25
Tempo Group, Inc.	26
YES Community Counseling Center	27

\*NAFAS Affiliate Organization

# Baldwin Council Against Drug Abuse, Inc. (BCADA)



<b><u>Type of Program:</u></b>	Non-Intensive Outpatient
<b><u>Community Served:</u></b>	Baldwin and Environs
<b><u>Population Served:</u></b>	Youths, Adolescents, Adults, Significant Others
<b><u>Address:</u></b>	950 Church Street Baldwin, NY 11510
<b><u>Telephone:</u></b>	516-546-1771
<b><u>Fax:</u></b>	516-623-5880
<b><u>Website:</u></b>	<a href="http://www.bcadaonline.org">www.bcadaonline.org</a>
<b><u>Email:</u></b>	<a href="mailto:claudia.rotondo@verizon.net">claudia.rotondo@verizon.net</a>
<b><u>Hours of Operation:</u></b>	Monday through Friday: 10:00am to 9:00pm
<b><u>Payment Plan:</u></b>	Sliding Scale, Medicaid, Other Insurance
<b><u>Services Provided:</u></b>	Individual, Group, Family Chemical Education, Anger Management, Women's, Relapse Prevention, Process
<b><u>Bilingual Services:</u></b>	No Bilingual Services Provided
<b><u>Wheelchair Access:</u></b>	No Wheelchair Access





## Central Nassau Guidance and Counseling Services: Community Program

<b><u>Type of Program:</u></b>	Outpatient
<b><u>Community Served:</u></b>	Town of Oyster Bay, Westbury, New Cassel
<b><u>Population Served:</u></b>	12 Years to Adult, Substance Users, Their Families, Significant Others
<b><u>Address:</u></b>	950 S. Oyster Bay Road Hicksville, NY 11801
<b><u>Telephone:</u></b>	516-822-4060
<b><u>Fax:</u></b>	516-396-0559
<b><u>Website:</u></b>	<a href="http://www.centralnassau.org">www.centralnassau.org</a>
<b><u>Email:</u></b>	<a href="mailto:lkessler@centralnassau.org">lkessler@centralnassau.org</a>
<b><u>Hours of Operation:</u></b>	Monday: 10:00am to 9:30pm Tuesday through Thursday: 9:00am to 9:30pm Friday: 9:00am to 5:00pm
<b><u>Payment Plan:</u></b>	Most Insurance Companies, Medicaid, Medicare, Sliding Scale
<b><u>Services Provided:</u></b>	Evaluations, Individual, Family and Group Therapy, Vocational Counseling, Psychiatric Evaluations and Medication Management, Suboxone, DWI Evaluations and Treatment. Groups Include: Education, Relapse Prevention, Recovery, Adolescent, Parenting, Women, Stress Management, Gay and Lesbian, 8-Week Anger Management Course.
<b><u>Bilingual Services:</u></b>	No Bilingual Services Provided
<b><u>Wheelchair Access:</u></b>	Wheelchair Accessible



## **C.O.D.A. (Committee On Drug Abuse) at the Five Towns Community Center**

- Type of Program:** Outpatient – Non-Intensive, Medically Supervised
- Community Served:** Five Towns of Nassau County: Woodmere, Lawrence, Cedarhurst, Hewlett, Inwood, Areas of Valley Stream and Lynbrook, Atlantic Beach, Long Beach and The Rockaways
- Population Served:** Teens, Adults, Couples, Families. Accept Referrals from C.P.S., A.C.S., Criminal Justice, Drug Courts
- Address:** 270 Lawrence Avenue  
Lawrence, NY 11559
- Telephone:** 516-239-6244, Ext. 256 or 255
- Fax:** 516-371-2147
- Website:** [www.fivetownscommunityctr.org](http://www.fivetownscommunityctr.org)  
[www.fivetownscommunityctr.org/abuse.html](http://www.fivetownscommunityctr.org/abuse.html)
- Email:** [ptropp@fivetownsmail.org](mailto:ptropp@fivetownsmail.org)
- Hours of Operation:** Monday: 9:00am to 8:00pm  
Tuesday: 9:00am to 9:00pm  
Wednesday: 9:00am to 6:00pm  
Thursday: 9:00am to 7:00pm  
Friday: 9:00am to 6:00pm  
No Saturday or Sunday
- Payment Plan:** Medicaid, Sliding Scale
- Services Provided:** Individual and Group Treatment and Education for Substance Abusers and Their Significant Others and/or Families. Counseling for Problem Gamblers and DWI Groups Also Available. In Addition to Drug Treatment Five Towns also has Headstart Program, Senior Citizen Program, Aid to Foreign Born Program on Premises, and its Satellite Location (Hempstead) has an HIV/AIDS Program.
- Bilingual Services:** Bilingual Services Provided
- Wheelchair Access:** Wheelchair Accessible



## Community Counseling Services of West Nassau

<b><u>Type of Program:</u></b>	Outpatient
<b><u>Community Served:</u></b>	Franklin Square and Surrounding Areas including Elmont, New Hyde Park, Floral Park, Stewart Manor, West Hempstead, North Valley Stream and Eastern Queens
<b><u>Population Served:</u></b>	Adults, Adolescents, Families
<b><u>Address:</u></b>	1200A Hempstead Turnpike Franklin Square, NY 11010
<b><u>Telephone:</u></b>	516-328-1717
<b><u>Fax:</u></b>	516-328-1627
<b><u>Website:</u></b>	<a href="http://www.ccswn.org">www.ccswn.org</a>
<b><u>Email:</u></b>	<a href="mailto:slafemina@ccswn.org">slafemina@ccswn.org</a>
<b><u>Hours of Operation:</u></b>	Monday through Thursday: 9:00am to 10:00pm Friday: 9:00am to 5:00pm
<b><u>Payment Plan:</u></b>	Medicaid, HIP, Insurance, Sliding Scale
<b><u>Services Provided:</u></b>	Treatment Services for Alcohol and Substance Abusers, Problem Gamblers and Their Family Members. Special Programs for Spanish Speakers, DWI/Courts, Adolescents and Women. Treatments Provided – Psychiatric Evaluations, Anger Management, Education Series, Relapse Prevention, Groups, Individual, Marital and Family Therapy.
<b><u>Bilingual Services:</u></b>	Bilingual Services Provided



# Confide Counseling Center



<b><u>Type of Program:</u></b>	Outpatient Drug/Alcohol
<b><u>Community Served:</u></b>	Rockville Centre Community and Surrounding Areas
<b><u>Population Served:</u></b>	Female/Male Adults and Adolescents, Criminal Justice, Senior Citizens
<b><u>Address:</u></b>	30 Hempstead Avenue, Suite H-6 Rockville Centre, NY 11570
<b><u>Telephone:</u></b>	516-764-5522
<b><u>Fax:</u></b>	516-764-0154
<b><u>Website:</u></b>	<a href="http://www.confideny.org">www.confideny.org</a>
<b><u>Email:</u></b>	<a href="mailto:art@confideny.org">art@confideny.org</a>
<b><u>Hours of Operation:</u></b>	Monday through Thursday: 9:00am to 8:00pm Friday: 8:30am to 12:30pm Saturday: 9:00am to 4:00pm Sunday: 9:00am to 2:00pm
<b><u>Payment Plan:</u></b>	Medicaid, Sliding Scale
<b><u>Services Provided:</u></b>	Individual Counseling, Group Counseling, Family Counseling, Relapse Prevention Counseling
<b><u>Bilingual Services:</u></b>	Bilingual Services Provided
<b><u>Wheelchair Access:</u></b>	Wheelchair Accessible





## **COPAY, Inc. (Community Organization for Parents and Youth, Inc.)**

<b><u>Type of Program:</u></b>	Outpatient
<b><u>Community Served:</u></b>	Great Neck and Surrounding Communities including Manhasset, North New Hyde Park, Floral Park, Mineola. Clients from Flushing and Eastern Queens also Seek Services.
<b><u>Population Served:</u></b>	Children, Teens, Adults and Families Struggling with Substance/Alcohol Abuse and Related Mental Health Conditions. Children and Teens in Need of Prevention Services or Delay Onset of Substance Abuse/Alcohol Abuse. Children/Teens at Risk for Violence and/or Gang Involvement. Children/Teens/Adults/Families whose Primary Language is Spanish.
<b><u>Address:</u></b>	21 North Station Plaza Great Neck, NY 11021
<b><u>Telephone:</u></b>	516-466-2509
<b><u>Fax:</u></b>	516-482-3145
<b><u>Website:</u></b>	<a href="http://www.copayofgreatneck.com">www.copayofgreatneck.com</a>
<b><u>Email:</u></b>	<a href="mailto:copayincgn@aol.com">copayincgn@aol.com</a>
<b><u>Hours of Operation:</u></b>	Monday through Thursday: 9:00am to 9:00pm Friday: 9:00am to 6:00pm
<b><u>Payment Plan:</u></b>	Medicaid, Sliding Scale, Insurance Plans
<b><u>Services Provided:</u></b>	Medically Managed Intensive Drug and Alcohol Treatment and Treatment for Co-Existing Mental Health Disorders; Prevention Services for Children and Youth; Children's After School Program; Children's Summer Program; Parenting Skills Training and Support; Family Therapy.
<b><u>Bilingual Services:</u></b>	Fully Bilingual (English and Spanish) and Culturally Competent
<b><u>Wheelchair Access:</u></b>	Wheelchair Accessible

# Education & Assistance Corporation (EAC)



<b><u>Type of Program:</u></b>	Outpatient Substance Abuse Treatment
<b><u>Community Served:</u></b>	Nassau County
<b><u>Population Served:</u></b>	Individuals 18 Years and Older with Substance Abuse Disorder. A Large Percentage of the Clients are Involved with the Criminal Justice System.
<b><u>Address:</u></b>	175 Fulton Avenue Hempstead, NY 11550
<b><u>Telephone:</u></b>	516-486-3222
<b><u>Fax:</u></b>	516-486-8956
<b><u>Website:</u></b>	<a href="http://www.eacinc.org">www.eacinc.org</a>
<b><u>Email:</u></b>	<a href="mailto:Cecily.Haramis@eacinc.org">Cecily.Haramis@eacinc.org</a>
<b><u>Hours of Operation:</u></b>	Monday through Thursday: 8:30am to 9:00pm Friday: 8:30am to 4:30pm Saturday: 9:00am to 4:30pm
<b><u>Payment Plan:</u></b>	Medicaid, Sliding Scale
<b><u>Services Provided:</u></b>	Assessment, Group/Individual Counseling, Family Counseling, Psychiatric Assessments/Referrals, Anger Management, DWI Evaluation and Treatment, Vocational Services. In Addition to Chemical Dependency Treatment, EAC also Provides a Broad Array of Educational, Vocational, Mediation and Alternative-to-Incarceration Intervention Services.
<b><u>Bilingual Services:</u></b>	No Bilingual Services Provided
<b><u>Wheelchair Access:</u></b>	Wheelchair Accessible



## Family and Children's Association

<b><u>Type of Program:</u></b>	Outpatient
<b><u>Community Served:</u></b>	All Areas of Nassau County
<b><u>Population Served:</u></b>	Adults, Adolescents, Family Members Affected by Substance Abuse
<b><u>Address:</u></b>	180 Broadway Hicksville, NY 11801  126 N. Franklin Street Hempstead, NY 11550  510 Hempstead Turnpike West Hempstead, NY 11552
<b><u>Telephone:</u></b>	516-935-6858 – Hicksville 516-486-7200 – Hempstead 516-437-6050 – West Hempstead
<b><u>Fax:</u></b>	516-935-2717 – Hicksville 516-486-7291 – Hempstead 516-437-6304 – West Hempstead
<b><u>Website:</u></b>	<a href="http://www.familyandchildrens.org">www.familyandchildrens.org</a>
<b><u>Email:</u></b>	<a href="mailto:info@familyandchildrens.org">info@familyandchildrens.org</a>
<b><u>Hours of Operation:</u></b>	Hicksville: Monday through Thursday: 9:00am to 10:00pm Friday: 9:00am to 5:00pm Saturday: 9:00am to 2:00pm  Hempstead and West Hempstead: Monday through Thursday: 8:30am to 9:00pm Friday: 8:30am to 5:00pm
<b><u>Payment Plan:</u></b>	Sliding Scale, Some Insurance Plans, Medicaid
<b><u>Services Provided:</u></b>	Individual, Group, Family Counseling. Psychiatric Evaluations, Vocational Services/Education, Chronic Relapse Group, Parolee Reentry Group, Adolescent Group, Co-Dependency Group. Prevention, Substance Abuse Education. Self Help (NA and AA) Groups.
<b><u>Bilingual Services:</u></b>	Bilingual Services Provided through the Hicksville Location's Hispanic Treatment Track (All Services Delivered in Spanish)
<b><u>Wheelchair Access:</u></b>	Wheelchair Accessible

# Freeport Pride



<b><u>Type of Program:</u></b>	Outpatient
<b><u>Community Served:</u></b>	Freeport and Vicinity
<b><u>Population Served:</u></b>	Adults, Youth, Families Affected by Substance Abuse
<b><u>Address:</u></b>	33 Guy Lombardo Avenue Freeport, NY 11520
<b><u>Telephone:</u></b>	516-546-2822
<b><u>Fax:</u></b>	516-546-5051
<b><u>Website:</u></b>	<a href="http://www.freeportpride.org">www.freeportpride.org</a>
<b><u>Email:</u></b>	op33@aol.com
<b><u>Hours of Operation:</u></b>	Monday through Thursday: 9:00am to 9:30pm Friday: 9:00am to 7:00pm
<b><u>Payment Plan:</u></b>	Medicaid, Some Insurance, Sliding Scale
<b><u>Services Provided:</u></b>	Individual, Family, Group Counseling, Vocational Counseling, Educational Series, Self Help Groups.
<b><u>Bilingual Services:</u></b>	Bilingual Services Provided
<b><u>Wheelchair Access:</u></b>	No Wheelchair Access





## Hispanic Counseling Center, Inc.

- Type of Program:** Medically Supervised 822 Chemical Dependence Program
- Community Served:** Nassau and Suffolk Counties
- Population Served:** Individuals Struggling with Addictions. Children and Families Affected by a Loved One's Drug and Alcohol Use with a Primary Focus on Serving the Latino Population.
- Address:** 344 Fulton Avenue  
Hempstead, NY 11550
- 1322 Fifth Avenue  
Bay Shore, NY 11706
- Telephone:** 516-538-2613 – Hempstead  
631-328-4959 – Bay Shore
- Fax:** 516-538-2515
- Website:** [www.hispaniccounseling.org](http://www.hispaniccounseling.org)
- Email:** [mmartorano@hispaniccounseling.com](mailto:mmartorano@hispaniccounseling.com)  
[hispaniccc@hispaniccounseling.org](mailto:hispaniccc@hispaniccounseling.org)
- Hours of Operation:** Monday through Thursday: 9:00am to 8:00pm  
Friday: 9:00am to 5:00pm  
Saturday: 9:00am to 1:00pm
- Payment Plan:** Sliding Scale, Private Insurance, Medicaid, Medicare, Family and Child Health Plus
- Services Provided:** Chemical Dependency Assessments, Individual, Group, Family Therapy, Psychiatric Evaluations and Medication Management. Specialty Groups: Women's Groups, Co-Occurring Disorders, Evidenced-Based Adolescent Groups, Psycho Educational Series and Parenting Groups. Access to Agency Based Outpatient Mental Health Services, HIV/AIDS Mental Health, Shelter Plus Care Subsidized Housing, Case Management and Family and Children Prevention Services.
- Bilingual Services:** Bilingual Services Provided
- Wheelchair Access:** Wheelchair Accessible

# Long Beach Medical Center



<b><u>Type of Program:</u></b>	Outpatient CD Program – FACTS Medically Managed Detox Program Methadone Maintenance Program
<b><u>Community Served:</u></b>	Long Beach and Surrounding Communities
<b><u>Population Served:</u></b>	All Ages. Treatment for Persons Affected by Substance Abuse and Addictions including Persons Struggling with Addiction and Family and Significant Others. Services for Problem Gambling. Adults 18 and Over in Need of Medically Managed Detoxification.
<b><u>Address:</u></b>	455 East Bay Drive Long Beach, NY 11561
<b><u>Telephone:</u></b>	516-897-1250 – Outpatient CD Program 516-897-1671 – Detox Program 516-897-1330 – MMTP
<b><u>Fax:</u></b>	516-897-1262 – Outpatient CD Program 516-897-4399 – Detox Program
<b><u>Website:</u></b>	<a href="http://www.lbmc.org">www.lbmc.org</a>
<b><u>Email:</u></b>	<a href="mailto:phincken@lbmc.org">phincken@lbmc.org</a>
<b><u>Hours of Operation:</u></b>	Monday through Thursday: 9:00am to 9:00pm Friday: 9:00am to 5:00pm Saturday: 9:00am to 3:30pm Office Open for Screenings 9:00am to 6:00pm for Direct Admission ER Available 24 hours
<b><u>Payment Plan:</u></b>	Third Party Payors, Medicare, Medicaid, Sliding Scale
<b><u>Services Provided:</u></b>	Comprehensive Bio-Psycho-Social Assessment; Family Therapy; Education; Individual and Group Counseling; Relapse Prevention; Medication Management; Anger Management; Services for Problem Gamblers. Stabilization of Withdrawal Symptoms; Minimization of Multiple Impacts of Withdrawal; Therapeutic Environment; Aftercare Planning. Methadone Maintenance Program; Medication Assisted Therapy.
<b><u>Bilingual Services:</u></b>	Bilingual Services Provided in Outpatient Program
<b><u>Wheelchair Access:</u></b>	Wheelchair Accessible



## Long Beach Reach, Inc.

- Type of Program:** Outpatient Chemical Dependency Including Intensive Outpatient Services
- Community Served:** Long Beach and Southwest Nassau County
- Population Served:** A Broad Range of Rehabilitative and Treatment Services to Close to 4,000 Youth and Their Families. Our Client Profiles Reflect the Socio-Economic and Ethnic Diversity of the South Shore of Nassau County.
- Address:** 2-12 West Park Avenue  
Long Beach, NY 11561
- Telephone:** 516-889-2332
- Fax:** 516-889-2399
- Website:** [www.longbeachreach.com](http://www.longbeachreach.com)
- Email:** [jsmith@longbeachreach.com](mailto:jsmith@longbeachreach.com)
- Hours of Operation:** Monday through Friday: 9:00am to 5:00pm  
Nightwatch Crisis Hotline:  
Sunday through Thursday: 6:00pm to 11:00pm  
Friday and Saturday: 8:00pm to 1:00am
- Payment Plan:** Fees for Treatment Services Only, Sliding Scale, Medicaid, Most Insurance Accepted, No One is Denied Service Due to an Inability to Pay
- Services Provided:** Substance Abuse Treatment, Prevention and Education Staffed by Experienced Psychologists, Social Workers and Psychiatrist and Nurse Practitioner Providing Individual, Group and Family Psychotherapy and Outreach Counseling in the Long Beach Schools. Psychotherapy, Psychiatric and Psychological Evaluations, Chemical Dependency Education, Play Therapy for Children Parent Education, Parent/Child Interaction and Vocational Counseling. Other Program Components include: Harriet Eisman Alternative Community High School Program, Sharing and Caring Teen Pregnancy Program, Nightwatch Crisis Hotline and Juvenile Justice Advocacy including the Court Liaison Unit Pre/Post Institutional Project (PPIP), Reach for Peace and Family Solutions Program which Offers Persons in Need of Supervision (PINS) Diversion Services.
- Bilingual Services:** Bilingual Services Provided (English/Spanish)
- Wheelchair Access:** Wheelchair Accessible



# Melillo Center



<b><u>Type of Program:</u></b>	Non-Intensive Outpatient Treatment
<b><u>Community Served:</u></b>	Glen Cove, Locust Valley, Glen Head, Sea Cliff
<b><u>Population Served:</u></b>	Adults Over 18 Years Old
<b><u>Address:</u></b>	113 Glen Cove Avenue Glen Cove, NY 11542
<b><u>Telephone:</u></b>	516-676-2388, Ext. 104
<b><u>Fax:</u></b>	516-759-5259
<b><u>Website:</u></b>	<a href="http://www.melillo.org">www.melillo.org</a>
<b><u>Email:</u></b>	<a href="mailto:jarfin@melillo.org">jarfin@melillo.org</a>
<b><u>Hours of Operation:</u></b>	Monday, Tuesday, Friday: 9:00am to 5:00pm Wednesday, Thursday: 9:00am to 9:00pm
<b><u>Payment Plan:</u></b>	Insurance, Medicaid, Sliding Scale
<b><u>Services Provided:</u></b>	Individual/Group/Family Therapy, Alcohol/Drug Education Series, DWI Education Series, Anger Management Education Series, Relapse Prevention Groups, Spanish Alcohol/Drug Education Series, Early Recovery Group, Repeat Offenders (Criminal Justice), Psychiatric Evaluation.
<b><u>Bilingual Services:</u></b>	Bilingual Services Provided
<b><u>Wheelchair Access:</u></b>	Wheelchair Accessible





## Oceanside Counseling Center, Inc.

<b><u>Type of Program:</u></b>	Outpatient Substance Abuse
<b><u>Community Served:</u></b>	Oceanside and Surrounding Communities
<b><u>Population Served:</u></b>	Adults, Adolescents, Family Members of Those Struggling with Addiction
<b><u>Address:</u></b>	71 Homecrest Court Oceanside, NY 11572
<b><u>Telephone:</u></b>	516-766-6283
<b><u>Fax:</u></b>	516-766-3705
<b><u>Website:</u></b>	<a href="http://www.oceansidecounselingcenter.com">www.oceansidecounselingcenter.com</a>
<b><u>Email:</u></b>	<a href="mailto:ebambrick@snch.org">ebambrick@snch.org</a>
<b><u>Hours of Operation:</u></b>	Monday through Thursday: 9:00am to 9:00pm Friday: 9:00am to 4:00pm Saturday: 9:00am to 1:00pm
<b><u>Payment Plan:</u></b>	Medicaid, Medicare, Most Major Insurances, Sliding Scale
<b><u>Services Provided:</u></b>	Individual, Group, Family Therapy, Psychiatric Evaluations and Medication Management. Specialty Groups: Women's Group, Anger Management Group, Gay and Lesbian Group, Co-Occurring Disorders Group, Co-Occurring Disorders Psycho-Educational Series, Adolescent Group and Parenting Workshops.
<b><u>Bilingual Services:</u></b>	No Bilingual Services Provided
<b><u>Wheelchair Access:</u></b>	No Wheelchair Access



# Peninsula Counseling Center Chemical Dependence Treatment

- Type of Program:** Medically Managed Outpatient Substance Abuse Treatment Services, Bilingual DWI Group, Adolescent Treatment Including Parenting Group
- Community Served:** Valley Stream and Surrounding Areas, Mandated to Treat Nassau County Residents
- Population Served:** Adults, Adolescents, Families, Significant Others
- Address:** 50 West Hawthorne Avenue, 3rd Floor  
Valley Stream, NY 11580
- Telephone:** 516-872-9698, Ext. 1380 or 1381
- Fax:** 516-872-8758
- Website:** [www.peninsulacounseling.org](http://www.peninsulacounseling.org)
- Email:** [tbaylis@peninsulacounseling.org](mailto:tbaylis@peninsulacounseling.org)
- Hours of Operation:** Monday through Thursday: 9:00am to 9:00pm  
Friday: 9:00am to 5:00pm
- Payment Plan:** All Insurance Plans, Medicaid, Medicare, Sliding Scale
- Services Provided:** Information/Referral, Chemical Dependency Treatment and Education Groups, Individual/Group/Family Therapy, Medication Assessment/Management, Urinalysis/Breathalyzer Testing, DWI Groups in Both English and Spanish, Parents of Adolescents Group Anger Management Groups.
- Bilingual Services:** Bilingual Services Provided (English/Spanish)
- Wheelchair Access:** Wheelchair Accessible



## People (BADA Inc.)

<b><u>Type of Program:</u></b>	Medically Supervised Outpatient
<b><u>Community Served:</u></b>	Bethpage and Surrounding Areas
<b><u>Population Served:</u></b>	Ages 6+, Adults
<b><u>Address:</u></b>	936 Stewart Avenue Bethpage, New York 11714
<b><u>Telephone:</u></b>	516-433-5344
<b><u>Fax:</u></b>	516-433-0067
<b><u>Email:</u></b>	Badainc@aol.com
<b><u>Hours of Operation:</u></b>	Monday through Thursday: 9:30am to 9:00pm Friday: 9:30am to 5:00pm Saturday: 9:30am to 2:00pm
<b><u>Payment Plan:</u></b>	Medicaid, Medicare, Private Insurance, Sliding Scale, Self Pay
<b><u>Services Provided:</u></b>	Information and Referrals, Intakes, Assessments, Evaluations, Individual, Family and Group Counseling, Alcohol and Drug Psycho Education Group, Recovery and Relapse Prevention Groups.
<b><u>Bilingual Services:</u></b>	No Bilingual Services Provided
<b><u>Wheelchair Access:</u></b>	No Wheelchair Access



# Port Counseling Center, Inc.



<b><u>Type of Program:</u></b>	Medically Supervised Outpatient
<b><u>Community Served:</u></b>	Port Washington, Roslyn, Manhasset
<b><u>Population Served:</u></b>	Adolescents 13+, Adults
<b><u>Address:</u></b>	225 Main Street Port Washington, NY 11050
<b><u>Telephone:</u></b>	516-767-1133
<b><u>Fax:</u></b>	516-767-3680
<b><u>Website:</u></b>	<a href="http://www.portcounseling.org">www.portcounseling.org</a>
<b><u>Email:</u></b>	<a href="mailto:portcounseling@verizon.net">portcounseling@verizon.net</a>
<b><u>Hours of Operation:</u></b>	Monday: 8:30am to 9:00pm Tuesday: 12:00noon-9:00pm Wednesday: 9:00am to 10:00pm Thursday: 11:30am to 9:00pm Friday: 8:30am to 4:30pm Saturday: 9:00am to 3:00pm
<b><u>Payment Plan:</u></b>	Medicaid, HIP, Some Other Insurance Plans with Out-of-Network Benefits, Sliding Scale
<b><u>Services Provided:</u></b>	Information and Referrals; Intakes, Assessments, Evaluations; Family Counseling and Education; Group Counseling; Individual Counseling; Vocational Counseling; Psycho-Education Group; Recovery Group/Relapse Prevention Groups; Adolescent Treatment Program; Chemical Dependency Education-Bilingual; Significant Other Treatment Program; Stop DWI Program to Bilingual; Breathalyzing; Detox (by Referral); Urinalysis; Community Education Seminars; Speaker's Bureau; Tobacco Cessation and Compulsive Gambling Treatment.
<b><u>Bilingual Services:</u></b>	Bilingual Services Provided (English/Spanish)
<b><u>Wheelchair Access:</u></b>	No Wheelchair Access



## REACT Center Inc.

<b><u>Type of Program:</u></b>	Outpatient
<b><u>Community Served:</u></b>	Roosevelt, Uniondale and Surrounding Areas
<b><u>Population Served:</u></b>	Adults, Adolescents, Families
<b><u>Address:</u></b>	27A Washington Place Roosevelt, NY 11575
<b><u>Telephone:</u></b>	516-623-7741
<b><u>Fax:</u></b>	516-623-7775
<b><u>Email:</u></b>	cjobson@reactcenterinc.org
<b><u>Hours of Operation:</u></b>	Monday through Thursday: 9:00 am to 9:00 pm Friday: 9:00 am to 5:00 p.m.
<b><u>Payment Plan:</u></b>	Sliding Scale, Medicaid, Most Private Insurance
<b><u>Services Provided:</u></b>	Individual, Group, Family Counseling. Intensive and Standard Clinic Service that includes Drug Education, Relapse Prevention, Specialized Groups for Co-Occurring Disorders, Women, Men, Anger Management, and DWI. Medical/Psychiatric Assessments, Vocational Services, Computer Literacy and Community Presentations.
<b><u>Bilingual Services:</u></b>	Bilingual Services Provided (English/Spanish)
<b><u>Wheelchair Access:</u></b>	Wheelchair Accessible

# Reflections Counseling Center



<b><u>Type of Program:</u></b>	Outpatient
<b><u>Community Served:</u></b>	Plainview and Surrounding Communities
<b><u>Population Served:</u></b>	Adolescent through Adult – Ages 11 and Up
<b><u>Address:</u></b>	202 Terminal Drive, Suite 3 Plainview, NY 11803
<b><u>Telephone:</u></b>	516-576-3120
<b><u>Fax:</u></b>	516-623-3446
<b><u>Email:</u></b>	reflectioncc@aol.com
<b><u>Hours of Operation:</u></b>	Monday: 10:00am to 5:00pm Tuesday through Thursday: 10:00am to 9:30pm Friday: 10:00am to 4:00pm Saturday: 10:00am to 1:00pm
<b><u>Payment Plan:</u></b>	Sliding Scale, HIP or Out-of-Network for Other Private Insurance, Medicaid
<b><u>Services Provided:</u></b>	Individual, Family and Group Therapy, Significant Others
<b><u>Bilingual Services:</u></b>	No Bilingual Services Provided
<b><u>Wheelchair Access:</u></b>	Wheelchair Accessible





## South Shore Child Guidance Center The C.A.R.E. Center (Children's Addiction Resource and Education)

<b><u>Type of Program:</u></b>	Medically Supervised Outpatient Chemical Dependency
<b><u>Community Served:</u></b>	Nassau County
<b><u>Population Served:</u></b>	Children of Alcoholics and/or Substance Abusers Aged 7+; Significant Others/Spouses Affected by a Substance Abuser; Alcohol/Substance Abusers – Adult or Teen; DWI Offenders
<b><u>Address:</u></b>	17 West Merrick Road, 2nd Floor Freeport, NY 11520
<b><u>Telephone:</u></b>	516-378-2992
<b><u>Fax:</u></b>	516-378-0348
<b><u>Website:</u></b>	<a href="http://www.southshorechildguidance.org">www.southshorechildguidance.org</a>
<b><u>Email:</u></b>	<a href="mailto:clinic@southshorechildguidance.org">clinic@southshorechildguidance.org</a>
<b><u>Hours of Operation:</u></b>	Monday through Thursday: 9:00am to 9:00pm Friday: 9:00am to 5:00pm Saturday: 9:00am to 1:00pm
<b><u>Payment Plan:</u></b>	Medicaid, Empire Plan, HIP, GHI, Affinity, Some Insurances with Out-of-Network Benefits, Sliding Scale
<b><u>Services Provided:</u></b>	Individual 1:1 Therapy; Group Therapy – Education and Support Therapy; Family Therapy; Psychiatric Evaluation; Medication Management.
<b><u>Bilingual Services:</u></b>	Bilingual Services Provided (English/Spanish)
<b><u>Wheelchair Access:</u></b>	No Wheelchair Access. Office is a 2nd story walk up. Arrangements can be made to meet the client elsewhere.



# Southeast Nassau Guidance Center, Inc.



<b><u>Type of Program:</u></b>	Chemical Dependency Outpatient and Mental Health Outpatient
<b><u>Community Served:</u></b>	Nassau County
<b><u>Population Served:</u></b>	Alcohol/Substance Abusers, Alcohol/Substance Dependency, Family/Significant Others Affected by Alcohol/Substance Abuser
<b><u>Address:</u></b>	3375 Park Avenue Wantagh, NY 11793 3106 Hempstead Turnpike Levittown, NY 11756 2146 Jackson Avenue Seaford, NY 11783
<b><u>Telephone:</u></b>	516-781-1911 – Wantagh, Levittown 516-679-9800 – Seaford
<b><u>Fax:</u></b>	516-781-1173 – Wantagh, Levittown 516-679-9087 – Seaford
<b><u>Email:</u></b>	smaidat@sngcounseling.org – Wantagh, Levittown lbabolscaj@sngcounseling.org – Seaford
<b><u>Hours of Operation:</u></b>	Monday through Thursday: 9:00am to 9:00pm Friday: 9:00am to 5:00pm
<b><u>Payment Plan:</u></b>	Most Insurance, Medicaid, Medicare, Sliding Scale Based on Ability to Pay for Those Without Coverage
<b><u>Services Provided:</u></b>	Adolescent Services, Aftercare Planning, Alcohol Treatment, Anger Management, Assessments, Co-Existing Mental Health Disorders, Couples Therapy, Crisis Intervention, Drug and Alcohol Testing (Breathalyzing, Oral, Urinalysis), Drug Treatment, Dual Diagnosis – MICA (Mentally Ill Chemical Abuser), DWI Evaluation/Treatment, Early Recovery Group, Education, Evaluations, Family Counseling, Group Counseling, Individual Counseling, Information, Intensive Outpatient Programs, Intervention, Marital Counseling, Medication Management, Men's Group, Outpatient Treatment, Outreach Services, Parenting Group, Psychiatric Evaluations, Recovery Group, Referrals, Relapse Prevention Services, Significant Other Counseling, Speakers Bureau, Stress Management Counseling, Suboxone, Substance Abuse Treatment, Tobacco Cessation, Vocational Services, Women's Group.
<b><u>Bilingual Services:</u></b>	Bilingual Services Provided (English/Spanish)
<b><u>Wheelchair Access:</u></b>	Wheelchair Accessible



## Tempo Group, Inc.

<b><u>Type of Program:</u></b>	Medically Supervised Outpatient Treatment
<b><u>Community Served:</u></b>	Nassau County Residents
<b><u>Population Served:</u></b>	Chemical Dependent Persons and their Families. Separate Program for Adolescents and their Families.
<b><u>Address:</u></b>	112 Franklin Place Woodmere, NY 11598  1260 Meadowbrook Road North Merrick, NY 11566  23 Willis Avenue Syosset, NY 11791
<b><u>Telephone:</u></b>	516-374-3671 – Woodmere 516-546-9008 – Merrick 516-921-3740 – Syosset
<b><u>Fax:</u></b>	516-374-7864 – Woodmere 516-546-9071 – Merrick 516-921-5019 – Syosset
<b><u>Email:</u></b>	info@tempogroup.org
<b><u>Hours of Operation:</u></b>	Monday through Thursday: 9:00am to 9:00pm Friday: 9:00am to 5:00pm
<b><u>Payment Plan:</u></b>	Most Insurance Plans, Medicaid, Sliding Scale. No One is Denied Services Due to an Inability to Pay.
<b><u>Services Provided:</u></b>	Assessment, Individual Counseling, Group Counseling, Family Counseling, Psychiatric Assessment, Medication Management and Referral Management for Higher Level Care Programs.
<b><u>Bilingual Services:</u></b>	No Bilingual Services Provided
<b><u>Wheelchair Access:</u></b>	Wheelchair Accessible

# YES Community Counseling Center



<b><u>Type of Program:</u></b>	Outpatient Chemical Dependency Program
<b><u>Community Served:</u></b>	Massapequa, Farmingdale, Plainedge, Levittown, Island Trees and Surrounding Areas
<b><u>Population Served:</u></b>	Children, Adolescents, Adults, Families
<b><u>Address:</u></b>	75 Grand Avenue Massapequa, NY 11758  152 Center Lane (Adolescents) Levittown, NY 11756
<b><u>Telephone:</u></b>	516-799-3203
<b><u>Fax:</u></b>	516-799-3081
<b><u>Website:</u></b>	<a href="http://www.yesccc.org">www.yesccc.org</a>
<b><u>Email:</u></b>	<a href="mailto:yesccc@vdot.net">yesccc@vdot.net</a>
<b><u>Hours of Operation:</u></b>	Monday through Thursday: 9:00am to 10:00pm Friday: 9:00am through 5:00pm
<b><u>Payment Plan:</u></b>	Sliding Scale, Medicaid, Most Private Insurance
<b><u>Services Provided:</u></b>	Individual, Family, Group Treatment. Specialized and Evidence-Based Groups for Adolescents, Young Adults, Women, Men and Significant Others. Relapse Prevention, Parenting Skills, and Smoking Cessation. Medical/Psychiatric Screenings and Management. Prevention Programs within the Community. Services are provided by Licensed Clinical Social Workers, Licensed Mental Health Counselors, and Other Highly Trained Professionals.
<b><u>Bilingual Services:</u></b>	Bilingual Services Provided (English/Spanish)
<b><u>Wheelchair Access:</u></b>	Wheelchair Accessible



## Youth and Family Counseling Agency of Oyster Bay – East Norwich, Inc.

<b><u>Type of Program:</u></b>	Outpatient
<b><u>Community Served:</u></b>	North Shore
<b><u>Population Served:</u></b>	Adults, Adolescents and Children who are Either Addicted or Affected by Substance Abuse
<b><u>Address:</u></b>	193A South Street Oyster Bay, NY 11771
<b><u>Telephone:</u></b>	516-922-6867
<b><u>Fax:</u></b>	516-922-5722
<b><u>Website:</u></b>	<a href="http://www.yfcaosterbay.org">www.yfcaosterbay.org</a>
<b><u>Email:</u></b>	<a href="mailto:brakusin@yfcaosterbay.org">brakusin@yfcaosterbay.org</a>
<b><u>Hours of Operation:</u></b>	Monday through Wednesday: 9:00am to 9:00pm Thursday: 9:00am to 8:00pm Friday: 9:00am to 1:00pm
<b><u>Payment Plan:</u></b>	Sliding Scale, Medicaid
<b><u>Services Provided:</u></b>	Individual, Group and Family Substance Abuse Treatment. Additional Groups for Tobacco Cessation, Anger Management, Significant Others. All Services are Available in Both English and Spanish.
<b><u>Bilingual Services:</u></b>	Bilingual Services Provided (English/Spanish)
<b><u>Wheelchair Access:</u></b>	Wheelchair Accessible



# Bridge Back to Life Center

## *NAFAS Affiliate Organization*

<b><u>Type of Program:</u></b>	Outpatient Substance Abuse
<b><u>Community Served:</u></b>	Nassau and Suffolk Counties
<b><u>Population Served:</u></b>	Adults, Adolescents 13 to 17 Years of Age
<b><u>Address:</u></b>	4271 Hempstead Turnpike Bethpage, NY 11714 (Adults and Adolescents)
	25 Newbridge Road Hicksville, NY 11801 (Adults Only)
<b><u>Telephone:</u></b>	516-520-6600 – Bethpage 516-433-6069 – Hicksville
<b><u>Fax:</u></b>	516-520-6750
<b><u>Website:</u></b>	<a href="http://www.bridgebacktolife.com">www.bridgebacktolife.com</a>
<b><u>Email:</u></b>	<a href="mailto:jdevitt@bridgebacktolife.com">jdevitt@bridgebacktolife.com</a>
<b><u>Hours of Operation:</u></b>	Monday through Friday: 9:00am to 9:00pm
<b><u>Payment Plan:</u></b>	Most Insurance, Medicaid, Self Pay
<b><u>Services Provided:</u></b>	Intense Outpatient Programs, Individual Psychotherapy, Group Psychotherapy, DUI/DWI Groups, Adolescent Programs, Assessments and Referral Services, Family Therapy, Medication Management and Educational Groups. Work with Probation, Parole, TASC, Drug Treatment Courts, Family Treatment Courts, Federal Probation, CPS, DWI Criminal Courts in all Counties and NYS/NYC Correctional Facilities.
<b><u>Bilingual Services:</u></b>	No Bilingual Services Provided
<b><u>Wheelchair Access:</u></b>	Wheelchair Accessible



## **Kenneth Peters Center for Recovery**

### ***NAFAS Affiliate Organization***

<b><u>Type of Program:</u></b>	Structured Intensive Outpatient Chemical Dependency Program
<b><u>Community Served:</u></b>	Nassau and Suffolk Counties
<b><u>Population Served:</u></b>	Ages 18 and Over
<b><u>Address:</u></b>	6800 Jericho Turnpike, Suite 122W Syosset, New York 11791  300 Motor Parkway, Suite 110 Hauppauge, New York 11788
<b><u>Telephone:</u></b>	516-364-2220 – Syosset 631-273-2221 – Hauppauge
<b><u>Fax:</u></b>	516-364-2980 – Syosset 631-273-4985 – Hauppauge
<b><u>Website:</u></b>	<a href="http://www.kenpeterscenter.com">www.kenpeterscenter.com</a>
<b><u>Email:</u></b>	<a href="mailto:claudia.ragni@kenpeterscenter.com">claudia.ragni@kenpeterscenter.com</a>
<b><u>Hours of Operation:</u></b>	Monday through Friday: 9:00am to 9:00pm Saturday: 9:00am to 1:00pm
<b><u>Payment Plan:</u></b>	Commercial Insurance and Self Pay
<b><u>Services Provided:</u></b>	Structured Intensive Outpatient Chemical Dependency Rehabilitation. Levels of Care from One Hour per Week, to 15 Hours per Week.
<b><u>Bilingual Services:</u></b>	No Bilingual Services Provided
<b><u>Wheelchair Access:</u></b>	Wheelchair Accessible





# Long Island Council on Alcoholism & Drug Dependence (LICADD)

## *NAFAS Affiliate Organization*

<b><u>Type of Program:</u></b>	Addiction, Recovery and Family Support Services
<b><u>Community Served:</u></b>	Nassau County
<b><u>Population Served:</u></b>	Youths, Adolescents, Adults, Significant Others
<b><u>Address:</u></b>	207 Hillside Avenue Williston Park, NY 11596
<b><u>Telephone:</u></b>	516-747-2606
<b><u>Fax:</u></b>	516-747-0714
<b><u>Website:</u></b>	<a href="http://www.licadd.org">www.licadd.org</a>
<b><u>Email:</u></b>	<a href="mailto:jreynolds@licadd.org">jreynolds@licadd.org</a>
<b><u>Hours of Operation:</u></b>	Monday through Saturday: 8:30am to 6:00pm
<b><u>Payment Plan:</u></b>	Sliding Scale, Free
<b><u>Services Provided:</u></b>	Chemical Dependency Evaluation and Assessments, Planned Family Interventions, Treatment Placements, Insurance Advocacy, Family Education Workshops Group, Relapse Prevention Support Groups, Anger Management Workshops and Coaching, DWI Assessments, Mentoring for Children of Incarcerated Parents.
<b><u>Bilingual Services:</u></b>	Bilingual Services Provided (English/Spanish)
<b><u>Wheelchair Access:</u></b>	Wheelchair Accessible



# Seafield Center/Seafield Mineola

## NAFAS Affiliate Organization

<b><u>Type of Program:</u></b>	OASAS Licensed, In-Patient Rehab and Detox (Seafield Center), Part 822 and Outpatient (Seafield Mineola)	
<b><u>Community Served:</u></b>	Chemically Dependent on Long Island, NYC (Seafield Center) and Chemically Dependent in Nassau County, Eastern Queens (Seafield Mineola)	
<b><u>Population Served:</u></b>	16 and Older (Seafield Center) 13 and Older (Seafield Mineola)	
<b><u>Address:</u></b>	Seafield Center: 7 Seafield Lane Westhampton Beach, NY 11978	Seafield Mineola: 110 Main Street Mineola, NY 11501
<b><u>Telephone:</u></b>	631-288-1122 – Seafield Center 516-747-5644 – Seafield Mineola	
<b><u>Fax:</u></b>	631-288-1638 – Seafield Center 516-747-2556 – Seafield Mineola	
<b><u>Website:</u></b>	<a href="http://www.seafieldcenter.com">www.seafieldcenter.com</a>	
<b><u>Email:</u></b>	nlawless@seafieldcenter.com – Seafield Center kdwyer@seafieldcenter.com – Seafield Mineola	
<b><u>Hours of Operation:</u></b>	Seafield Center: 24/7  Seafield Mineola: Monday through Friday: 8:30am to 9:00pm Saturday: 9:00am to 12:30pm	
<b><u>Payment Plan:</u></b>	Most Insurances, Medicaid, Self Pay	
<b><u>Services Provided:</u></b>	<u>Seafield Center:</u> Detox and Inpatient Rehabilitation, Adolescents 16+ and Young Adult Program, Medication Assisted Withdrawal (Suboxone), Women's Program, Dual Focus Program, 12 Step Recovery Program, Individualized Treatment Plan, Spiritual Counseling, Relapse Prevention, Acupuncture, Transportation Provided.  <u>Seafield Mineola:</u> Assessments, Individual and Group Counseling, Men's and Women's IOP, Evening IOP for the Working Professional, Intensive Dual Focused Group, Young Adults Recovery Group, Professionals Group, Criminal Justice Group including DWI, Batterers Intervention Program, Anger Management, Conjoint Sessions, Psychiatric Evaluations and Medication Monitoring, Free Educational Series.	
<b><u>Bilingual Services:</u></b>	Bilingual Services Provided (Spanish and Portuguese)	
<b><u>Wheelchair Access:</u></b>	Wheelchair Accessible	





# NAFAS

NASSAU ALLIANCE FOR ADDICTION SERVICES

## Visit the NAFAS website at [www.nassaualliance.org](http://www.nassaualliance.org)

The NAFAS website is a resource for individuals searching for help in dealing with drug, alcohol or gambling dependency, addiction or abuse. If you, or someone that you care about has a problem or is in need of help, the NAFAS website can provide immediate information, educational articles and referral sources.



## Search Local Programs and Services

The NAFAS website provides referrals to community agencies for people struggling with the effects of drugs, alcohol, gambling or other addictions, dependencies or abuses. Programs can be sorted by location and category of service. Details about each organization are included, along with contact information and specific programs offered.



## Learn More About Addiction

The NAFAS website features recent news articles, frequently asked questions, links to helpful organizations, and educational resources. Browse our extensive library to learn more about how you can help yourself or your loved ones cope with the struggles associated with addiction.

## NAFAS

You're never alone on the road to recovery.

If you need immediate help or advice, call **516-679-1111** or call the 24/7 New York State HOPEline at **877-8-HOPENY (877-846-7369)**.

# ALCOHOL AND DRUGS: IT'S EVERYONE'S ISSUE

## **Overcoming the Stigma of Addiction:**

Many Americans perceive individuals who have substance abuse problems as outcasts in society. Some think they are uneducated, poor or immoral. Unfortunately, these misconceptions have contributed to widespread myths about addiction. For many men and women, they fight not only the disease of addiction but also the stigma associated with it. Denial and social embarrassment force many people to suffer in silence rather than seek treatment.

While the reasons for stigma are numerous, the public generally views drug and alcohol abuse as a choice rather than a serious health condition. Stigma creates obstacles to proper treatment and hinders recovery. These obstacles perpetuate substance use and can lead to other serious problems such as family violence, poor academic performance, legal problems, and the spread of infectious diseases. Individuals faced with drug or alcohol problems are also impacted by public and private health-related policies that may restrict their access to appropriate health care, public benefits, housing or employment.

There are many small steps individuals and their families can take to fight addiction and overcome stigma in their own lives and the lives of others.

## **Learn the Facts:**

Addiction is a chronic but treatable disorder of the brain and body chemistry. People who have dependency problems find it difficult to control their desire for drugs or alcohol despite serious health, social or legal consequences. This inability is the result of complex physical, genetic and psychological factors. Addiction results in changes in both behavior and judgment.

The truth is addiction affects everyone. Addiction is not limited to any race, gender, religion or nationality. A person's economic status is not an indicator, nor is their occupation. Those suffering from the disease or in recovery do not fit into any one particular category. Teachers, doctors, business professionals, law enforcement... attorneys, laborers, nurses...coaches, elected officials, athletes or actors can all struggle with addiction. Substance abuse can affect anyone, from moms and dads to teenagers and senior citizens.

## **Acceptance:**

Many people who have substance abuse challenges remain in denial about their problem. Often a person's family suffers by living with someone who is alcohol dependent, or dealing with the repercussions of drugs. Families can be reluctant to acknowledge their loved one's suffering because they too feel guilt or shame for not being able to help them stop. Learning to accept that you or someone you love has issues with addiction is a difficult process. Understanding that it is not your fault can help you begin to transition towards rehabilitation.

## **Speak Out:**

Once a person goes through rehabilitation, it is imperative that they pass on their experiences to others. The public needs to hear first-hand accounts of the suffering and heartache that addiction causes, and how the pervasive stigma deepens the suffering. Everyone can benefit from knowing how men and women on the road to recovery can inspire others in similar circumstances. This will help to educate those who are not familiar with the disease and its ramifications.

## **Community Advocacy:**

Many people who have successfully overcome their addictions can help combat the stigma and join community recovery advocacy organizations or support those currently in rehabilitation. Concerned citizens can call or write local newspapers and other media to investigate and accurately report the perceptions and strides made. Elected officials can be contacted on a host of related topics, for example, to expand insurance coverage for treatment or to make recovery housing available.

## **Taking Action:**

Addiction is a deadly disease that requires immediate attention. For many people facing substance abuse concerns, seeking treatment can be a frightening experience. Unfortunately, avoidance only makes the problem worse. There is no better time than now to take action. Each and every day a person makes a decision to get help. With one phone call, a person's life can be saved.

To learn more about eliminating the stigma of drug and alcohol dependency and get the help you or your loved one needs, contact the Nassau Alliance For Addiction Services (NAFAS), at: [www.nassaualliance.org](http://www.nassaualliance.org).

**You're Never Alone on the Road to Recovery.**



## ABOUT NAFAS

NAFAS is a not-for-profit coalition of community-based agencies serving Nassau County, Long Island. We are committed to delivering affordable, accessible and comprehensive prevention and treatment services to individuals and families struggling with the consequences of drug, alcohol, gambling and other addictions and abuses.

You're never alone on the road to recovery.



# NAFAS

---

NASSAU ALLIANCE FOR ADDICTION SERVICES

---

[www.nassaualliance.org](http://www.nassaualliance.org)

Funding for the NAFAS anti-stigma campaign has been provided by the Nassau County Dept. of Mental Health, Chemical Dependency & Developmental Disabilities Services.